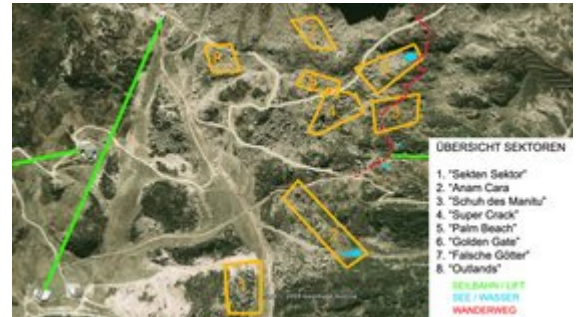


## PAZNAUN - ISCHGL - SILVAPARK GALTÜR SEKTOR FALSCHER GÖTTER

### APPROACH

Ascent with the chairlift "Birkhahnbahn" (free of charge for Silvretta Card owners), then a short walk on foot.

Alternatively ascent with the car to the parking spot at the Ballunspitzbahn (limited parking, fee-based)



### SEKTOR "Falsche Götter"



Nr.	Name	Grad	Länge
1a	Falsche Götter	8a+	
1b	Falsche Götter	7c	
1c	Projekt		
2a	Udo's 7b	7b+	
2b	Udo's Kante	6a	
2c	Udo's Platte	5a	
3	Kleiner Highball	5a	

4	Kleine Götter	7c+
5	El dorado	6a
6	Platte	6a
7a	Kante	5a
7b	Knackige Traverse	6b
8	Projekt	
9	Dynamit	6a

---

#### Climbers Paradise Tirol

Climbing and boulder in Tirol online - 15 tourist regions and more than 1.000 climbing possibilities on Climber's Paradise Tirol. All topos in print quality, including detailed information about grades, access and safety.



© Climbers Paradise 2016-2021 - All contents are protected by copyright.